



# SERVICE PARTS LIST

BUL. 54-08-1072

1/2" ELECTRIC DRILL

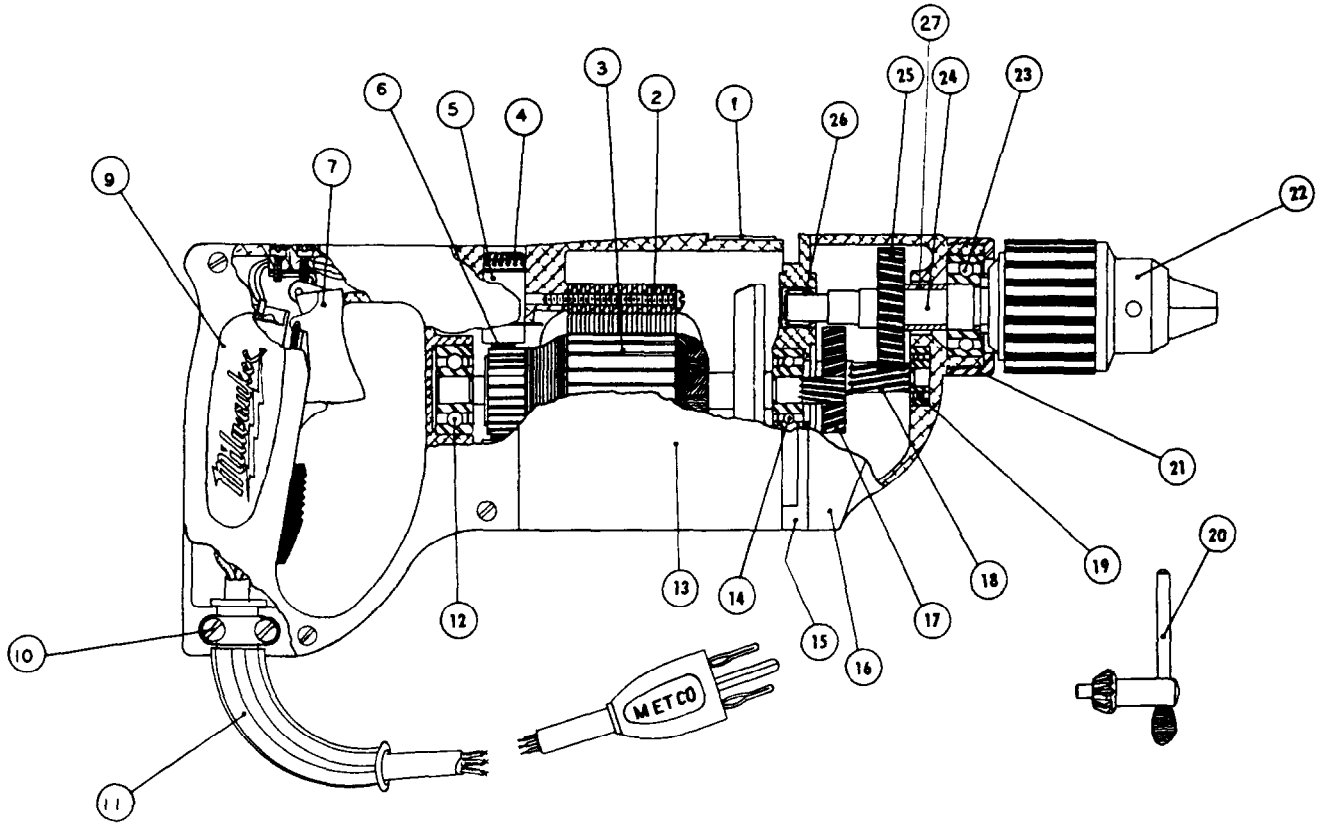
REVISED BUL 6126-3 DATE Feb. '68

Catalog No. 1000-1

Starting Serial No. 126-5361

WIRING INSTR.

Both Model and Serial No. must be furnished to obtain correct parts.



230 V Motor  
16-46-1190 Armature  
18-46-1141 Field

CORRECTS & SUPERSEDES  
SERVICE BULLETIN 6126-3  
DATED 6/30/65

### ILLUSTRATED PARTS

FIG.	PART NO.	DESCRIPTION OF PART	NO.REQ.	FIG.	PART NO.	DESCRIPTION OF PART
1	12-98-0800	Name Plate		15	28-28-0581	Diaphragm Assy.
2	18-42-1141	Field Assembly		16	28-14-0681	Gear Case
3	16-42-1210	Armature Assembly		17	32-40-1241	Intermediate Gear
4	23-44-0060	Brush Retaining Screw	(2)	18	36-66-2001	Intermediate Pinion
5	22-22-0080	Brush Holder Assembly	(2)	19	02-04-0640	Inter. Shaft Ball Bearing
6	22-18-0100	Carbon Brush Assembly	(2)	20	48-66-3280	Chuck Key
7	23-66-0485	Switch		21	42-52-0071	Bearing Cap
9	28-20-3601	Handle Cover		22	48-66-1360	1/2" Chuck
10	28-17-0400	Cord Clamp Strap		23	02-04-1560	Ball Bearing
11	22-64-0350	Cord Set		24	38-50-3651	Spindle
12	02-04-0970	Ball Bearing (Comm. End)		25	32-75-1601	Spindle Gear
13	28-50-4488	Motor Housing		26	02-50-2110	Needle Bearing
14	02-04-0940	Ball Bearing (Pinion End)		27	45-36-0210	Spindle Gear Spacer

### MISCELLANEOUS PARTS NOT SHOWN

PART NO.	DESCRIPTION OF PART	NO.REQ.	PART NO.	DESCRIPTION OF PART	NO.REQ.
02-50-1640	Needle Bearing		06-81-6150	8-32x1/2 Fil. Hd. Sems Cord Clamp Strap Scrs.	(2)
43-62-0160	Handle		06-81-8625	6-32x1/4 Rd. Hd. Sems Ground Screw (Brass)	
44-90-0130	Handle Ring		06-81-6350	8-32x1 Fil. Hd. Sems Gear Case Screws	
06-81-8400	4-40x1/4 Rd. Hd. Name Pl. Scrs. Sems	(2)	06-81-6650	8-32x1 1/4 Fil. Hd. Sems Gear Case Screws	(2)
06-81-5790	6-32x1/4 Fil. Hd. Sw. Mtg. Sems	(2)	06-81-6600	8-32 x 1/4 Fil. Hd. Sems Field Screws	(2)
23-86-0110	Brush Holder Insul. Washer	(2)	06-83-2650	1/4-20x3/8 Hd'less Brush Holder Set Screws	(2)
06-42-1600	Woodruff Key		06-81-3700	8-32x7/8 Oval Hd. Handle Cover Screws	(4)
48-03-0010	Attach. Plug Adaptor		06-75-3150	1/4-20x1 Left Hd. Allen Hd. Cap Sc. (Chuck Ret. Sc.)	
			06-42-0800	Woodruff Key	
			*23-16-0340	Switch Insulator	